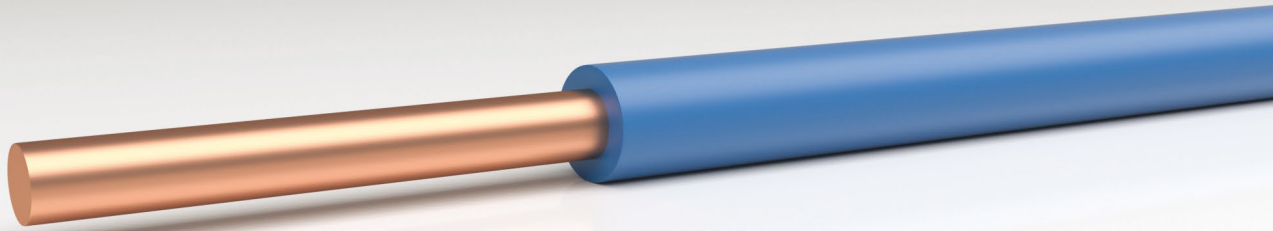


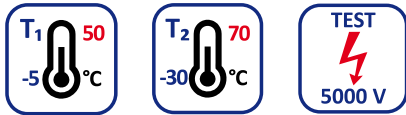
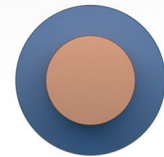


XCE



BASIC CHARACTERISTICS OF THE CABLE

ELECTRIC



CONSTRUCTION OF THE CABLE

- *Copper conductor*
- *PE insulation (HD)*

STANDARDS

TPEFK 21-10-2005/902+A5

STN EN 13763-1
STN EN 13763-4
STN EN 13763-5
STN EN 13763-6

CABLE APPLICATION





XCE

Color of the insulation

white
red
blue
brown
yellow
green

Nominal thickness of the insulation, diameters.

Construction	t [mm]	t _{min} [mm]	d [mm]	Diameter tolerance [mm]	Nominal active resistance [Ω/km]	Active resistance tolerance
0,6/1,40	0,40	0,35	1,40	+0,05	61,0	±4,9
0,8/1,60			1,60		34,3	±2,7

t – nominal thickness of the insulation

t_{min} – minimal thickness of the insulation

d – nominal diameter of conductors over the insulation

Subject to technical changes. If necessary, contact technical support. Values are not guaranteed.